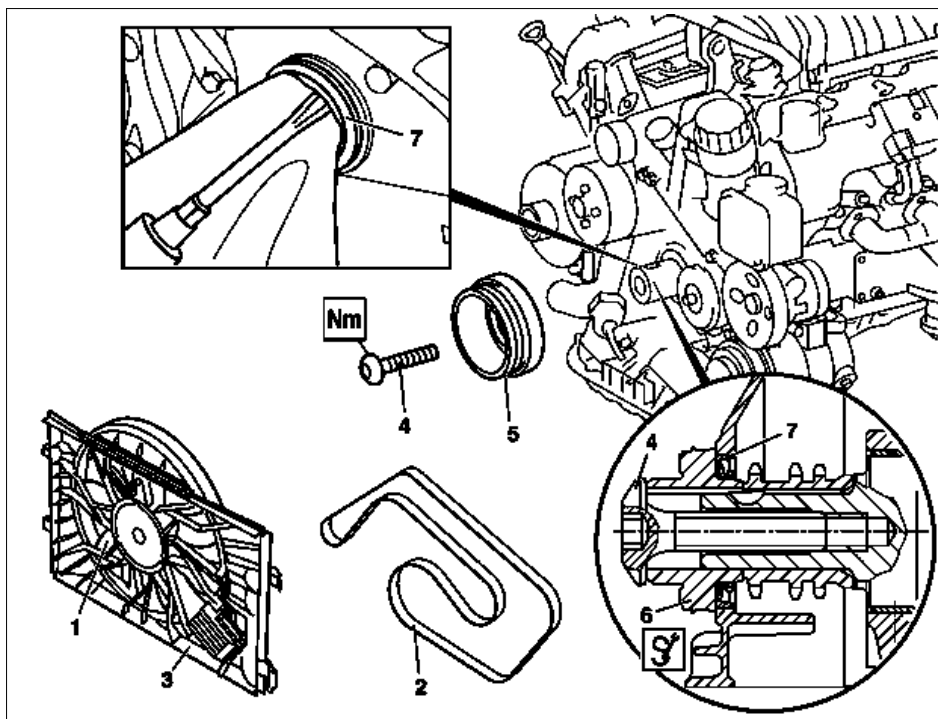


- ENGINE 112** in MODEL 170, 202, 203, 208, 209, 210, 220
- ENGINE 113** in MODEL 209
- ENGINE 113** (except 113.991) in MODEL 215, 220
- ENGINE 113.981** in MODEL 163.174
- ENGINE 112.913** in MODEL 211.061 /261
- ENGINE 112.949** in MODEL 211.065 /265
- ENGINE 113.967** in MODEL 211.070 /270
- ENGINE 113.963** in MODEL 230.475
- ENGINE 112.917** in MODEL 211.080 /280
- ENGINE 112.954** in MODEL 211.082 /282
- ENGINE 113.969** in MODEL 211.083 /283
- ENGINE 113.988** in MODEL 203.076 /276
- ENGINE 113.989** in MODEL 171.473

Shown on engine 112 in model 203

- 1 Electric fan
- 2 Poly-V belt
- 3 Fan shroud
- 4 Center bolt
- 5 Belt pulley/vibration damper
- 6 Sleeve
- 7 Crankshaft radial seal



P03.20-2067-06

**Modification notes**

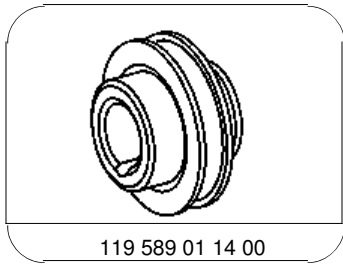
|        |                                  |                                     |
|--------|----------------------------------|-------------------------------------|
| 9.1.06 | Central bolt to vibration damper | <a href="#">*BA03.30-P-1001-01D</a> |
|--------|----------------------------------|-------------------------------------|

|   |   | <b>Remove/install</b>  |   |
|---|---|--|---|
| 1 | Remove belt pulley / vibration damper (5) | Model 170.466, 203 with engine 112<br>Except model 170.466, 203 with engine 112<br><i>i</i> Inspect contact surface of hub for signs of wear.  | AR03.30-P-1600CA  |
| 2 | Remove crankshaft radial sealing ring (7) | <i>i</i> Press out with a screwdriver.<br><i>i</i> Do not damage crankshaft and mounting bore for crankshaft radial sealing ring (7). Use a clean rag as a base.<br><i>i</i> Circumference and sealing lip of crankshaft sealing ring (7) as well as the mating contact surface on the vibration damper must be free of oil and grease.<br><i>i</i> <b>Installation:</b> Install front crankshaft radial sealing ring (7) with the aid of the sleeve (6).<br><i>i</i> Do not coat crankshaft radial sealing ring (7) with sealant.<br>☑ Sleeve | AR03.20-P-3000-01B<br><br><a href="#">*119589011400</a> |
| 3 | Install in the reverse order              |  |   |

|                                  |   |  |                           |
|----------------------------------|---|--|---------------------------|
| <p><b>⚠ Danger!</b></p> <p>4</p> | <p><b>Risk of accident</b> caused by vehicle starting off by itself when engine is running. <b>Risk of injury</b> caused by contusions and burns during starting procedure or when working near the engine as it is running</p> <p>Check oil viscosity after performing engine test run</p> | <p>Secure vehicle to prevent it from moving by itself.</p> <p>Wear closed and snug-fitting work clothes. Do not touch hot or rotating parts.</p> | <p>AS00.00-Z-0005-01A</p> |
|----------------------------------|---|--|---------------------------|

**Nm** Flywheel, driven plate, vibration damper, starter ring gear

| Number             | Designation                      | Engine 112     | Engine 113.94/96/97/98 |
|--------------------|----------------------------------|----------------|------------------------|
| BA03.30-P-1001-01D | Central bolt to vibration damper | Stage 1 Nm 200 | 200                    |
|                    |                                  | Stage 2 4° 90  | 90                     |



119 589 01 14 00

Sleeve