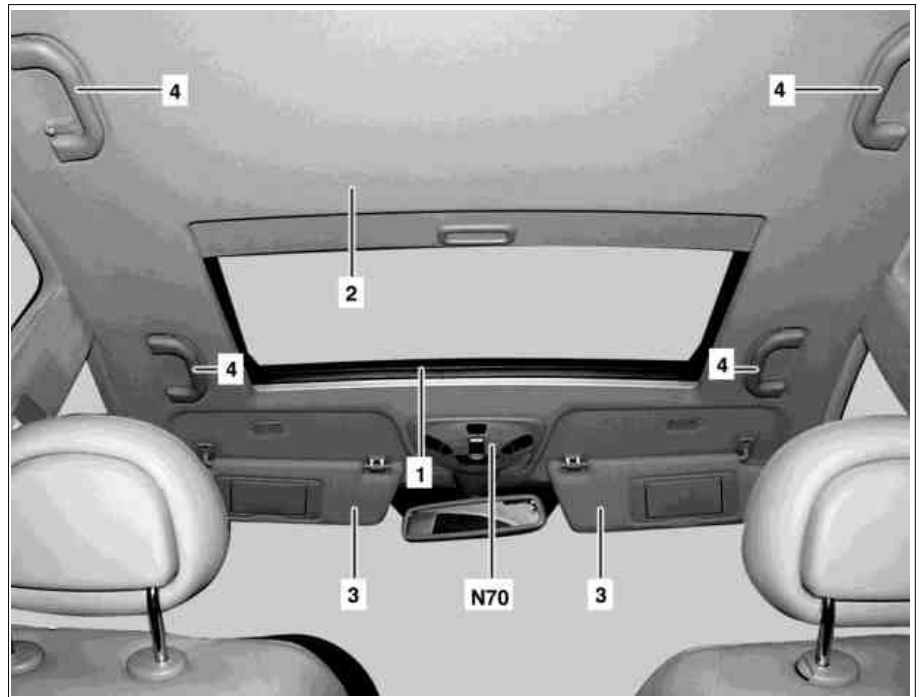


MODEL 203.0

Illustrated on vehicles with code (414a)
Electric glass sliding/pop-up roof

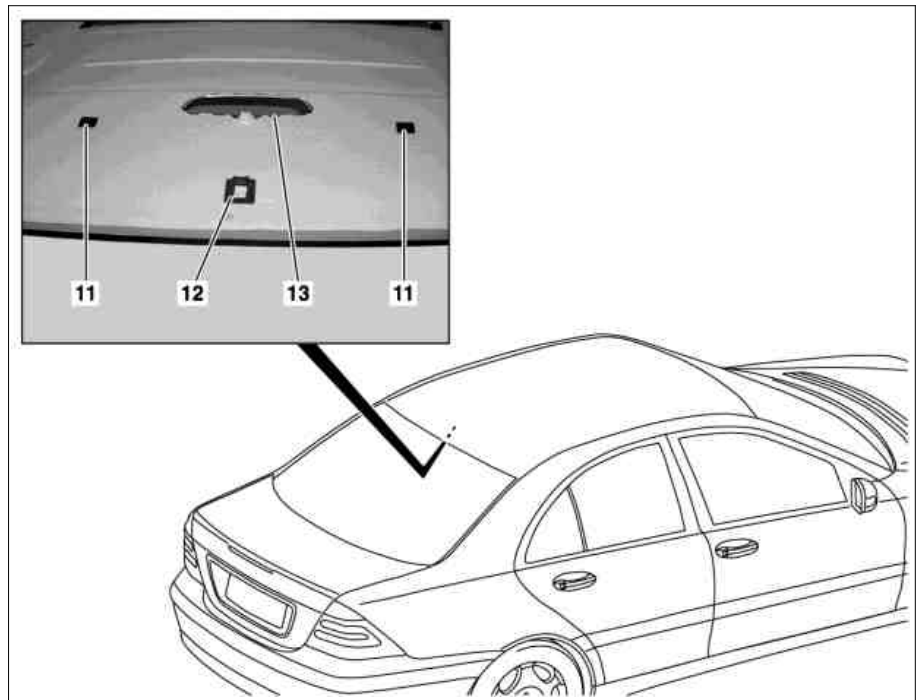
- 1 Sliding roof rail
- 2 Headliner
- 3 Sun visor
- 4 Grab handle

N70 Overhead control panel control unit



P68.30-2199-06

- 11 Velcro strip
- 12 Hook
- 13 Installation frame

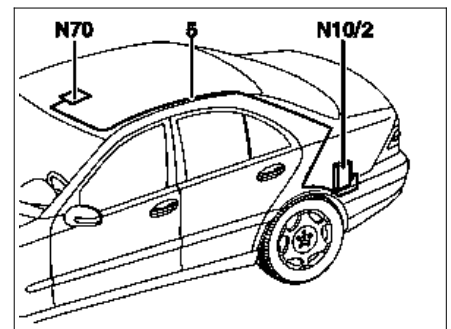


P68.30-2322-06

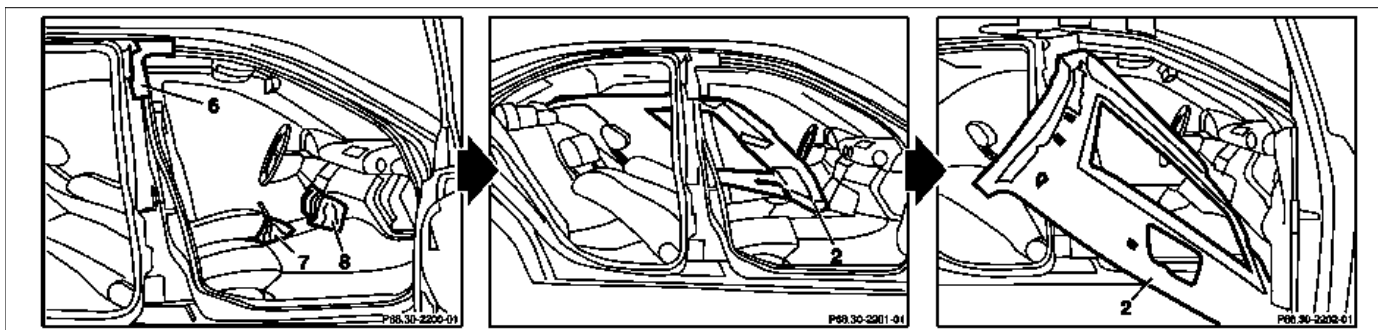
5 Main wiring harness

N10/2 Rear SAM control unit with fuse and relay module

N70 Overhead control panel control unit



P68.30-2204-01



P68.30-2203-07

Illustrated on vehicles with code (414a)
Electric glass sliding/pop-up roof

2 Headliner
6 Cover

7 Cover
8 Cover

Modification notes

29.5.06	"Disconnect/connect battery ground line" removed		
---------	--	--	--

	Remove/install		
	Note on function reliability of windowbag		AH91.60-P-0693-01A
1.1	Open sliding/pop-up roof and remove sliding roof rail (1)	on vehicles with code (414a) electric glass titling/sliding roof	
2	Remove left and right paneling from A-pillar		AR68.30-P-4050P
3	Remove left and right paneling from upper B-pillar and lay down to side		AR68.30-P-4700P
4	Remove left and right paneling from C-pillar		AR68.30-P-4490P
5	Remove center console		AR68.20-P-2000P
6	Move shift lever or selector lever toward rear.	On vehicles with transmission 722.6 it is necessary to release the selector, see: ↓ Function of shift lock override	GF27.10-P-3023P
7	Remove overhead control panel control unit (N70)		AR82.20-P-1000P
8	Remove inside rearview mirror		AR68.40-P-0001P
9	Remove inside rearview mirror holder		
10.1	Remove rain sensor cover and disconnect rain sensor	On vehicles with code (345a) Rain sensor	
11	Disconnect light switch-on sensor		
12	Remove left and right sun visor (3), unscrew bolt from left and right pivot bearing.		
13	Remove handle (4) on left and right side of vehicle		AR68.30-P-4330P
14.1	Remove interior protection transmitter and receiver	Only on vehicles with code (882b) Interior monitoring (with ATA only) when replacing headliner (2).	AR80.50-P-9820F
15.1	Remove rear dome lamp	On vehicles except code (220a) Parktronic system (PTS)	AR82.20-P-0113P
15.2	Remove Rear PTS warning indicator dome lamp	On vehicles with code (220a) Parktronic system (PTS)	AR54.65-P-0004P
16.1	Remove rear seat backrest	For vehicles without code (287a) Through-loading feature	AR91.12-P-1620PC
16.2	Remove side upholstery of left rear seat backrest	For vehicles with code (287a) Through-loading feature.	AR91.12-P-1710P
17.1	Expose headliner wiring harness (2) in area of right C-pillar and disconnect electrical connectors	On vehicles with code (273) telephone preequipped for D-net portable cellular telephone or code (329) portable cellular telephone preequipped for AMPS system or code (494) California version or code (498) Japanese version or code (852) portable cellular telephone preequipped completely on dome or code (853) MB standard telephone or code (854) MB portable cellular telephone or code (855) TELE AID or code (810) sound system	
18	Expose main wiring harness (5) for headliner (2) in the interior of vehicle up to passage in trunk		
19	Remove left paneling in trunk		AR68.30-P-4600P

20	Disconnect electrical connectors for headliner (2) main wiring harness (5) from rear SAM control unit with fuse and relay module (N10/2)		
21	Expose main wiring harness (5) for headliner (2) in the trunk up to vehicle interior		
22	Pull main wiring harness (5) for headliner (2) through passage in trunk into vehicle interior from passenger compartment side		
23	Remove edge guard from passenger door cutout		
24	Move left and right seats all the way back and move backrests to prone position to extent possible	i See Operator's Manual	
25	Install cover (6), cover (7) and cover (8)	i Use suitable adhesive tape.	
26	Loose Velcro strip (11) in area of installation frame (13)		
27	Unhook hooks (12) in area of installation frame (13) from roof paneling		
28.1	Pull headliner (2) to front	on vehicles with code (414a) electric glass tilting/sliding roof	
29	Guide headliner (2) between driver seat backrest and B-pillar paneling, then between area of gearshift bracket and area of center console connection	i Aid of helper required. Deformation of the headliner (2) is not critical and considered to be normal. When handled correctly, there will be no permanent deformation.	
30	Remove headliner (2) through passenger door cutout		
31.1	Prepare headliner (2) for installation	Only when replacing headliner (2).	AR68.30-P-4305P
32	Install in the reverse order		