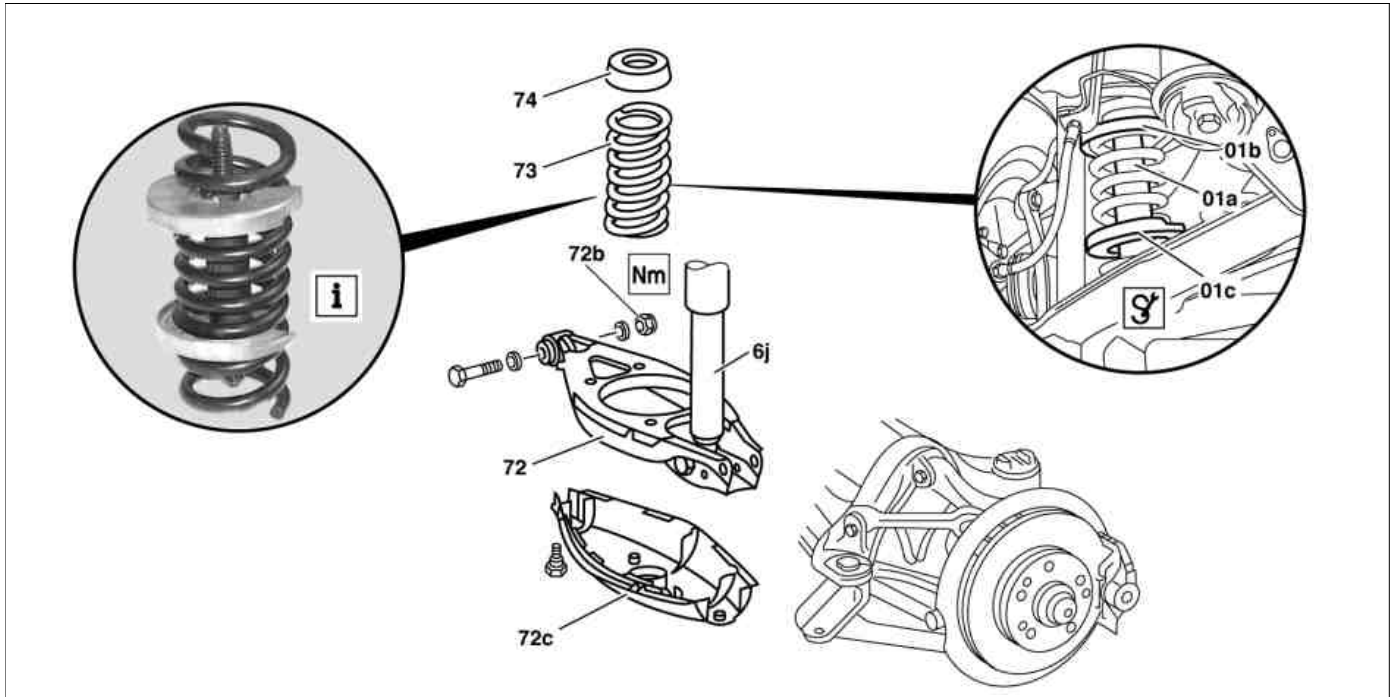


MODEL 203

MODEL 209 except CODE (P98) Black Series

MODEL 211.0, 219 except CODE (489) Airmatic (semi-active air suspension)



P32.20-2037-09

Shown on model 203

- 01a Clamping plate
- 01b Clamping plate
- 01c Clamping plate

- 6j Shock absorber
- 72 Spring control arm
- 72b Nut

- 72c Cover
- 73 Rear spring
- 74 Rubber bushing

Modification notes

30.4.02	Figure modified from 70 Nm to 50 Nm 45 °	Value changed in BA35.20-P-1001-01A on model 209	*BA35.20-P-1001-01A
---------	--	--	---------------------

	Remove/install		
Danger!	Risk of death caused by vehicle slipping or toppling off of the lifting platform.	Align vehicle between columns of vehicle lift and position four support plates at vehicle lift support points specified by vehicle manufacturer.	AS00.00-Z-0010-01A
	Notes on self-locking nuts and bolts		AH00.00-N-0001-01A
	While working on the rear axle, care must be taken to ensure that the surface of aluminum components do not get any scratches, cracks and notches. Otherwise the service life of the parts will be affected		
Installation	Only tighten nuts and bolts of chassis components when vehicle is in a ready-to-drive condition.		
1	Lift vehicle on lifting platform.	Model 203, 209 Model 211 Model 219	AR00.60-P-1000P AR00.60-P-1000T AR00.60-P-1000TX
2	Remove cover (72c) of spring control arm (72)		
3	Remove plastic cone in the top rubber mount (74) of the rear spring (73)	Model 211, 219 Extractor Only serves as an assembly aid and is no longer installed.	*123589053300
4	Insert clamping plates (01b, 01c) in rear spring (73)	Tensioning plates Model 203 except 203.08 /28, Model 209 Model 203.08 / 28 Model 211, 219	*202589146300 *211589036300

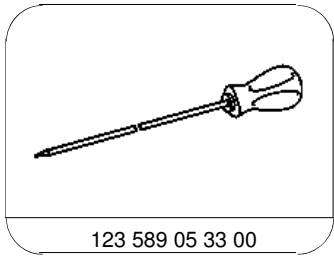
5	Insert tensioning device (01a) in clamping plates (01b, 01c)	Tensioning device Model 203 except 203.08 /28, model 209 Model 203.08 / 28 Model 211, 219	*202589023100 *202589013100
Danger! 6	Risk of injury caused by pinching or crushing when working on springs or spring bodies that are under tension Tension rear spring (73) Springs: general background information.	Use only approved tensioning devices; shield off hazard area if necessary. Inspect special tools for damage and proper operation (visual inspection). Wear protective gloves. Installation: Model 203 /209: On springs which have been relieved of load the clamping plates are to be attached so that approx. two windings remain free at the ends of the spring. Model 211 /219: Observe oil chalk markings. Model 203 except 203.081 /084 /281 /284, Model 209 Model 203.081 /084 /281 /284 Model 211, 219	AS00.00-Z-0001-01A AR32.20-P-0200-01A AR32.20-P-0200-06T AH32.20-P-9404-01A
7.1	Unscrew nut (72b) and detach spring control arm (72) from rear axle carrier	Model 203, 209 Use crowbar to press track control arm from its mount. 	*BA35.20-P-1001-01A
7.2	Detach shock absorber (6j) from spring control arm (72)	Model 211, 219 Push together shock absorber and position at side of spring control arm. 	*BA32.25-P-1003-03A
8	Remove rear spring (73) with rubber bushing (74). AP AP AP	Clean track control arm (72) in area surrounding the anchorage point. After replacing the rear spring or rubber mount: ↓ Check, correct headlamp setting: Model 203, 209 Model 211 Model 219	AP82.10-P-8260P AP82.10-P-8260T AP82.10-P-8260TX
9	Install in the reverse order		

Spring control arm

Number	Designation		Model 203	Model 209	
BA35.20-P-1001-01A	Self-locking nut, spring control arm to rear axle carrier	Stage 1	Nm	70	50
		Stage 2	∠°	-	45

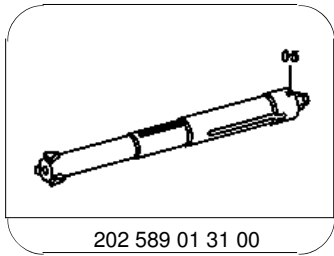
Rear axle shock absorber

Number	Designation		Model 211 steel suspension	Model 219 steel suspension	
BA32.25-P-1003-03A	Self-locking nut for attaching shock absorber to spring control arm		Nm	-	-
		M10	Nm	55	55



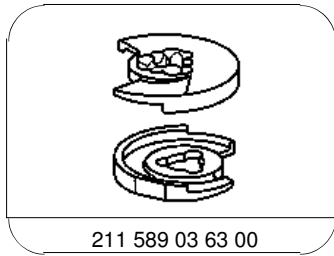
123 589 05 33 00

Puller



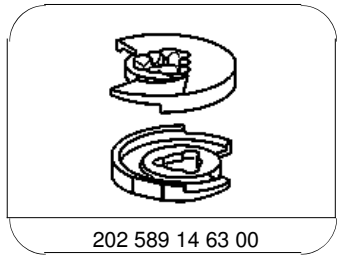
202 589 01 31 00

Tensioning device



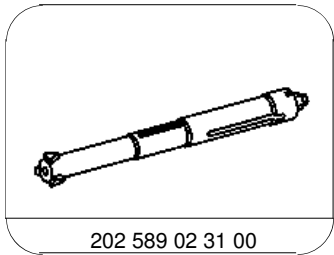
211 589 03 63 00

Tensioning plates



202 589 14 63 00

Tensioning plates



202 589 02 31 00

Tensioning device