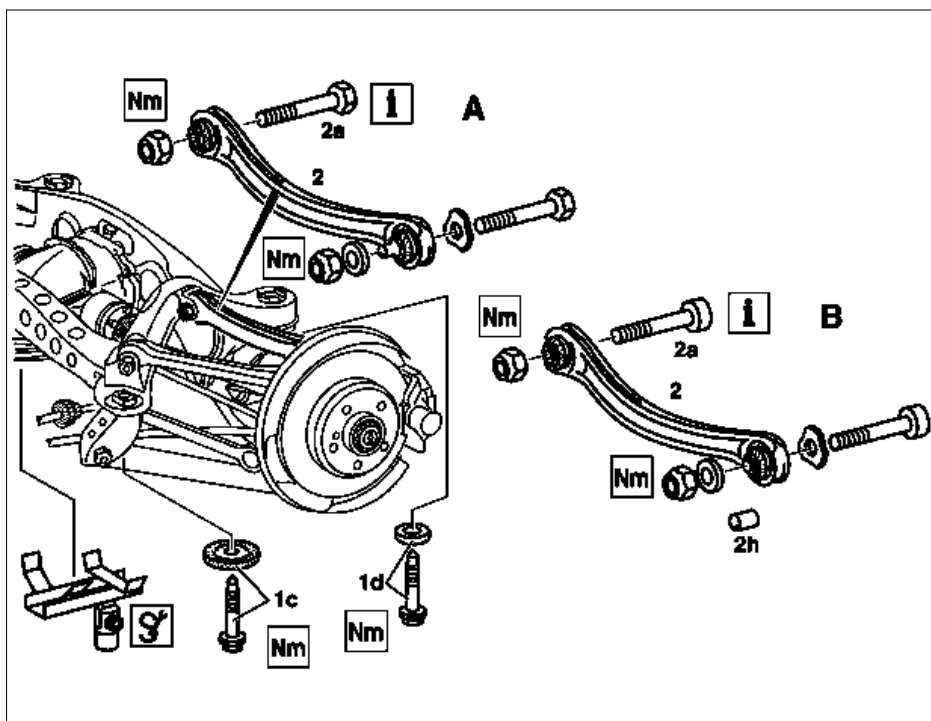


MODEL 129, 170, 202, 208, 210

Shows model 210

A Version up to 12/97 or 01/98

B Version as of 01/98 or 02/98



P35.20-2017-06

Modification notes

28.2.98	Diameter of wheel carrier bores modified	Model 129, 170, 202, 208 as of 02/98 Model 210 as of 01/98	BT35.20-P-0005-01A
28.2.98	Bolted connection, camber strut to wheel carrier modified	i Tightening torque of bolted connection M10 increased from 45 Nm to 70 Nm for new bolted connection M12 .	BT35.20-P-0007-01A
28.2.98	ⓘ If a new camber strut is fitted to a conventional wheel carrier version (dia. of fixing bore in wheel carrier Approx.. 13.5 mm), the sleeve (2h) must be installed in the wheel carrier to reduce the diameter to Approx.. 12.2 mm	Model 129, 170, 202, 208 as of 02/98 Model 210 as of 01/98, see: ↓ Install sleeve for camber strut in wheel carrier	AR35.20-P-0110-02A

Fig. item etc.	Work instructions		
ⓘ Installation	Replace self-locking nuts and bolts		
⚠ Danger!	Risk of death caused by vehicle slipping or toppling off of the lifting platform.	Align vehicle between columns of vehicle lift and position four support plates at vehicle lift support points specified by vehicle manufacturer.	AS00.00-Z-0010-01A
Ⓢ	Assembly attachment		*140589016200
1c, 1d	Rear axle mount bolt, front and rear	i Model 210 removal only: If the direction of installation of the bolt (2a) is from the front, the front and rear rear axle suspension bolt (1c, 1d) is not detached. i Installation: Recut thread on frame floor with tap. Nm Front rear axle mount bolt. Nm Rear rear axle mount bolt	*BA35.10-P-1001-01A *BA35.10-P-1002-01A
2 BT BT	Camber strut Diameter of wheel carrier bores modified Bolted connection, camber strut to wheel carrier modified	Ⓢ Box wrench Model 129, 170, 202, 208 as of 02/98 Model 210 as of 01/98 Model 129, 170, 202, 208 as of 02/98 Model 210 as of 01/98 ⓘ The rear axle shaft must be horizontal when tightening the nuts. Nm Camber strut to rear axle carrier	*129589010300 BT35.20-P-0005-01A BT35.20-P-0007-01A *BA35.20-P-1001-02A

		Nm Camber strut to wheel carrier	*BA35.20-P-1002-02A
⌚ 2h	Sleeve in wheel carrier to reduce diameter	Model 129, 170, 202, 208 as of 02/98 Model 210 as of 01/98, see: ↓ Install sleeve for camber strut in wheel carrier	AR35.20-P-0110-02A

Nm Rear axle carrier

Number	Designation		Model 210
BA35.10-P-1001-01A	Self-locking bolt, front rear axle carrier rubber mount to frame floor	Nm	90
		with bolt	Stage 1 Nm -
		Flange Ø 24 mm	Stage 2 Δ° -
		with bolt	Stage 1 Nm -
BA35.10-P-1002-01A	Self-locking bolt, rear axle carrier rear rubber mount to frame floor	flange Ø 26 mm	Stage 2 Δ° -
		with bolt	Stage 1 Nm -
		Flange Ø 24 mm	Stage 2 Δ° -
		with bolt	Stage 1 Nm -
		flange Ø 26 mm	Stage 2 Δ° -

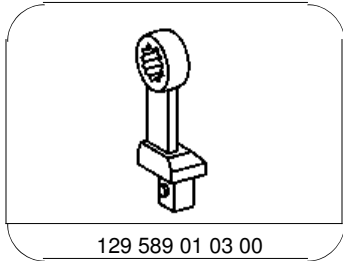
Nm Camber strut

Number	Designation		Model 129	Model 170	Model 202	Model 208
BA35.20-P-1001-02A	Self-locking nut, camber strut to rear axle carrier.	Stage 1 Nm	70	70	70	70
		Stage 2 Δ°	-	-	-	-
BA35.20-P-1002-02A	Self-locking nut, camber strut to wheel carrier.	M10 Nm	40	40	40	40
		M12 Nm	70	70	70	70

Nm Camber strut

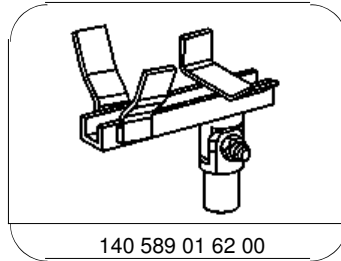
Number	Designation		Model 210 except 210.07 with Code 979 and Code Z06
BA35.20-P-1001-02A	Self-locking nut, camber strut to rear axle carrier.	Stage 1 Nm	70

		Stage 2	∠°	-
BA35.20-P-1002-02A	Self-locking nut, camber strut to wheel carrier.	M10	Nm	40
		M12	Nm	70



129 589 01 03 00

Ring wrench



140 589 01 62 00

Assembly attachment