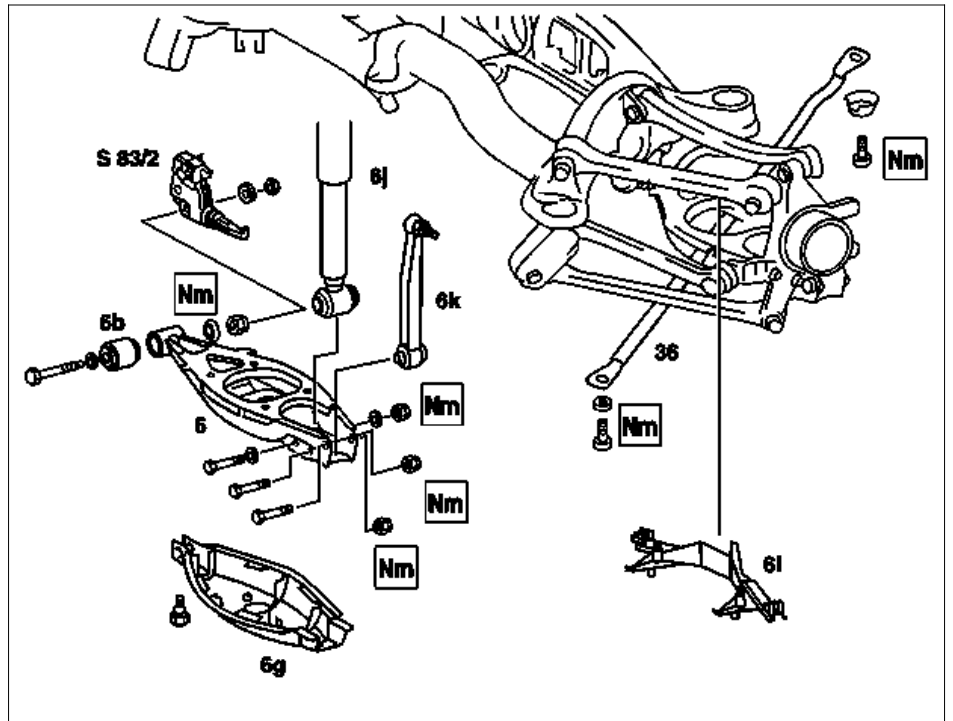


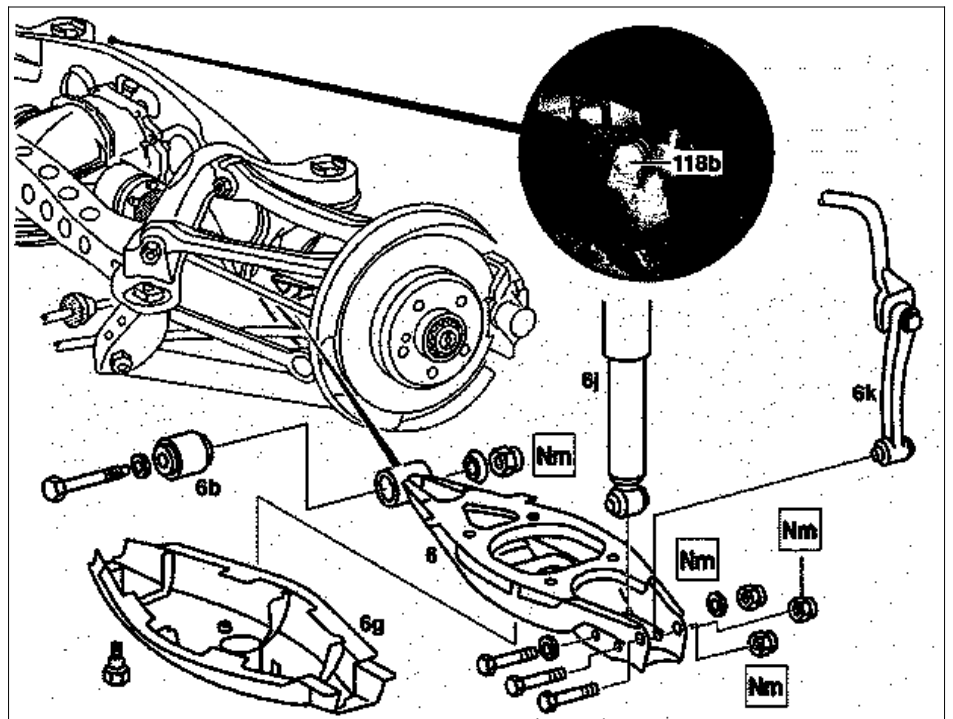
MODEL 129, 170, 202, 208, 210

Shows model 129



P35.20-0251-06

Shows model 210



P35.20-2021-06

Fig. item etc.	Work instructions		
🔧 Installation	Replace self-locking nuts		
⚠️ Danger!	Risk of death caused by vehicle slipping or toppling off of the lifting platform.	Align vehicle between columns of vehicle lift and position four support plates at vehicle lift support points specified by vehicle manufacturer.	AS00.00-Z-0010-01A
i	Remove/install rear spring		AR32.20-P-0230A

	Adjust roll bar switch	Model 129 up to 09/95 Following installation	ra91001290860x
6	Spring control arm	The rear axle shaft must be horizontal when tightening the nuts Spring control arm to rear axle carrier Spring control arm to wheel carrier	*BA35.20-P-1001-01A *BA35.20-P-1002-01A
6b	Rubber mount of spring control arm Harder spring control arm rubber mount Spring control arm rubber bearings standardized	If necessary after checking: ↓ Remove/install spring control arm rubber mount Extraction and insertion tool Model 129 Model 129, 202	AR35.20-P-0114-01B *129589014300 BT35.20-P-0001-01A BT35.20-P-0002-01A
6 g	Spring control arm covering		
6j	Remove shock absorber or spring strut	Remove at spring control arm. Shock absorber Model 210 Model 170, 129, 202, 208 Spring strut (level control system/ADS) Model 210 Model 202, 208 Model 129	*BA32.25-P-1002-03B *BA32.25-P-1003-03A *BA32.30-P-1002-01A *BA32.30-P-1003-01B *BA32.31-P-1003-03A
6k	Stabilizer bar link rod	Model 129 Model 170, 202, 208 Model 210	*BA32.20-P-1002-04A *BA32.20-P-1002-04C *BA32.20-P-1001-04D
6 l	Remove/install guide rail at spring control arm	Model 129 with ASR, ETS, ESP	AR35.20-P-0114-02A
36	Frame cross-strut	Model 170, 129 Model 208.4	*BA61.10-P-1001-01A *BA61.10-P-1003-01C
118b	Linkage between headlight leveling device and right-hand spring control arm	Vehicles with xenon headlamps only	
S83/2, S83/3	Remove/install left or right rear axle roll bar (RB) switch	Model 129 up to 09/95	ra91001290860x

Rear axle stabilizer bar

Number	Designation		Model 129	Model 129 with ADS
BA32.20-P-1002-04A	Self-locking nut for attaching link rod to spring control arm	Nm	20	20

Rear axle stabilizer bar

Number	Designation		Model 170	Model 202 without level adjustment	Model 202 with level control
BA32.20-P-1002-04C	Self-locking nut, linkage rod to track control arm	Nm	20	20	20

Rear axle stabilizer bar

Number	Designation		Model 208 without level control	Model 208 with level control
BA32.20-P-1002-04C	Self-locking nut, linkage rod to track control arm	Nm	20	20

Nm Rear axle stabilizer bar

Number	Designation		Model Series 210 with ride-height control/ADS CODE 217	Model Series 210 without ride-height control/ADS CODE 217
BA32.20-P-1001-04D	Self-locking nuts, torsion bar link rod to spring control arm	Nm	20	20

Nm Rear axle shock absorber

Number	Designation		Model 129	Model 170	Model 202
BA32.25-P-1003-03A	Self-locking nut for attaching shock absorber to spring control arm	Nm	55	55	55
		M10 Nm	-	-	-

Nm Rear axle shock absorber

Number	Designation		Model 208
BA32.25-P-1003-03A	Self-locking nut for attaching shock absorber to spring control arm	Nm	55
		M10 Nm	-

Nm Rear axle shock absorber

Number	Designation		Model 210
BA32.25-P-1002-03B	Self-locking nut for attaching shock absorber to spring control arm	Nm	55

Nm Suspension strut rear axle

Number	Designation		Model 210.0 with level control/ADS
BA32.30-P-1002-01A	Self-locking nut, suspension strut level control/ADS to spring control arm	Nm	55

Nm Suspension strut rear axle

Number	Designation		Model 202 with level control	Model 208 with level control
BA32.30-P-1003-01B	Self-locking nut, ride-height control strut to track control arm	Nm	55	55

Nm Strut for rear axle level control system

Number	Designation		Model 129 with electronic level control system / ADS II
BA32.31-P-1003-03A	Self-locking nut, ride-height control strut to track control arm	Nm	55

Nm Spring control arm

Number	Designation			Model 129	Model 170	Model 202
BA35.20-P-1001-01A	Self-locking nut, spring control arm to rear axle carrier	Stage 1	Nm	70	70	70
		Stage 2	∠°	-	-	-
BA35.20-P-1002-01A	Self-locking nut, spring control arm to wheel carrier.	Stage 1	Nm	120	120	120
		Stage 2	∠°	-	-	-

Nm Spring control arm

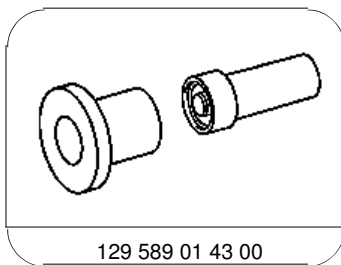
Number	Designation			Model 208	Model 210 except 210.07 with Code 979 and Code Z06
BA35.20-P-1001-01A	Self-locking nut, spring control arm to rear axle carrier	Stage 1	Nm	70	70
		Stage 2	Δ°	-	-
BA35.20-P-1002-01A	Self-locking nut, spring control arm to wheel carrier.	Stage 1	Nm	120	120
		Stage 2	Δ°	-	-

Nm Frame floor assembly

Number	Designation		Model 129	Model 170
BA61.10-P-1001-01A	Self-locking bolt connecting rear cross strut to frame floor	Nm	120	60

Nm Frame floor assembly

Number	Designation		Model 208.435/445/447/465/470
BA61.10-P-1003-01C	Self-locking bolt connecting rear cross strut to frame floor	Nm	60



Press out/in tool