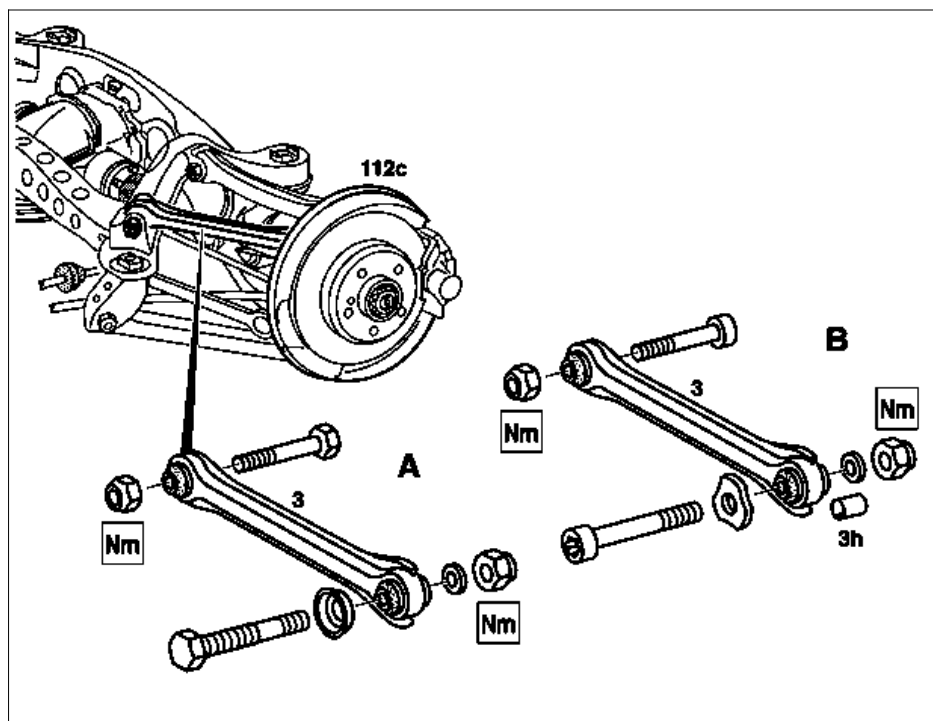


MODEL 129, 170, 202, 208, 210

Shows model 210

A Version up to 12/97 or 01/98

B Version as of 01/98 or 02/98



P35.20-2018-06

## Modification notes

28.2.98	Diameter of wheel carrier bores modified	Model 129, 170, 202, 208 as of 02/98 Model 210 as of 01/98	BT35.20-P-0005-01A
28.2.98	Bolted connection, tension arm to wheel carrier modified	Model 129, 170, 202, 208 as of 02/98 Model 210 as of 01/98	BT35.20-P-0008-01A
28.2.98	ⓘ If a new strut rod is mounted on a previous wheel carrier (dia. of mounting hole in the wheel carrier approx. 13.5 mm), it is essential to mount the sleeve (3h) in the wheel carrier in order to achieve a reduction in dia. to approx. 12.2 mm	Model 129, 170, 202, 208 as of 02/98 Model 210 as of 01/98, see: ↓  Insert sleeve for strut rod in wheel carrier	AR35.20-P-0111-01A

Fig. item etc.	Work instructions		
ⓘ Installation	Replace self-locking nuts		
⚠ Danger!	<b>Risk of death</b> caused by vehicle slipping or toppling off of the lifting platform.	Align vehicle between columns of vehicle lift and position four support plates at vehicle lift support points specified by vehicle manufacturer.	AS00.00-Z-0010-01A
3	Torque strut	ⓘ Model 129, 170, 202, 208 removal: Before pulling out the hexagon bolt on the rear axle carrier, press the wheel carrier forwards - relieve the load. ☑ Box wrench ☑ Retainer wrench for counterholding internal Torx bolt	*129589010300 *202589001000
BT	Diameter of wheel carrier bores modified	Model 129, 170, 202, 208 as of 02/98 Model 210 as of 01/98	BT35.20-P-0005-01A
BT	Bolted connection, tension arm to wheel carrier modified	Model 129, 170, 202, 208 as of 02/98 Model 210 as of 01/98  ⓘ The rear axle shaft must be horizontal when tightening the nuts Nm Torque strut to rear axle carrier Nm Torque strut to wheel carrier	BT35.20-P-0008-01A  *BA35.20-P-1001-03A *BA35.20-P-1002-03A
ⓘ 3h	Sleeve in wheel carrier to reduce diameter	Model 129, 170, 202, 208 as of 02/98 Model 210 as of 01/98, see: ↓	

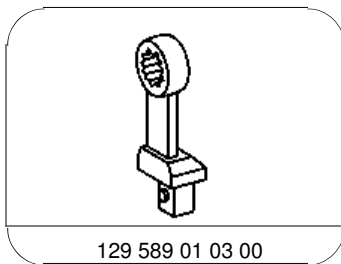
		Insert sleeve for strut rod in wheel carrier	AR35.20-P-0111-01A
112 C	Brake cover plate without dent	Only model 202.018/020/022/023/121: To remove the strut rods, press the bolt out of the wheel carrier brake cover plate approx. 3 mm towards the brake disk.	

**Nm Torque strut**

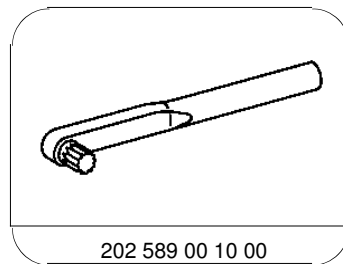
Number	Designation			Model 129	Model 170	Model 202	Model 208
BA35.20-P-1001-03A	Self-locking nut, tension arm to rear axle carrier	M12	Nm	70	70	70	70
		M14	Nm	-	-	-	-
BA35.20-P-1002-03A	Self-locking nut, torque strut to wheel carrier	M12	Nm	70	70	70	70
		M16	Nm	-	-	-	-

**Nm Torque strut**

Number	Designation			Model 210
BA35.20-P-1001-03A	Self-locking nut, tension arm to rear axle carrier	M12	Nm	70
		M14	Nm	120
BA35.20-P-1002-03A	Self-locking nut, torque strut to wheel carrier	M12	Nm	70
		M16	Nm	230



Ring wrench



Retainer wrench