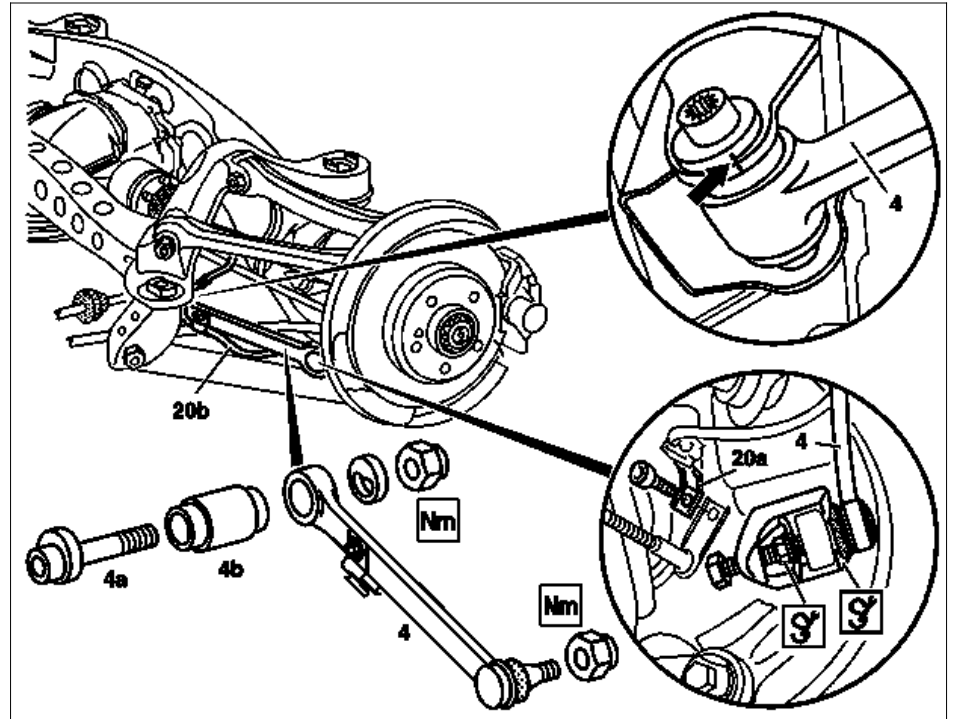


MODEL 129, 170, 202, 208, 210

Shows model 210



P35.20-0228-06

## Modification notes

3.5.07	Self-locking nut, tie rod to wheel carrier, silver or blue M10x1,5	New tightening torque applied, see Fig. item 4th	*BA35.20-P-1002-04A
--------	--	--	---------------------

Fig. item etc.	Work instructions		
ⓘ Installation	Replace self-locking nuts		
⚠ Danger!	<b>Risk of death</b> caused by vehicle slipping or toppling off of the lifting platform.	Align vehicle between columns of vehicle lift and position four support plates at vehicle lift support points specified by vehicle manufacturer.	AS00.00-Z-0010-01A
	Check toe at rear axle and adjust if necessary	ℹ Following installation	AR40.20-P-0332A
4	Tie rod	<ul style="list-style-type: none"> <li>ⓘ Do not damage rubber boot.</li> <li>🔧 Box wrench for track rod hexagon nut at rear axle carrier.</li> <li>🔧 Thrust piece</li> <li>🔧 Puller</li> <li>ⓘ The rear axle shaft must be horizontal when tightening the nuts</li> <li>Clean grease off ball head bolt and beveled seat in wheel carrier.</li> <li>Press ball head bolt firmly into cone, hold with Allen wrench if necessary.</li> <li>Nm Track rod to wheel carrier: ↓ Models 129, 140, 170, 202, 208, 210</li> <li>Nm Track rod to rear axle carrier</li> </ul>	<ul style="list-style-type: none"> <li>*129589010300</li> <li>*201589056300</li> <li>*201589013300</li> <li>*BA35.20-P-1002-04A</li> <li>BT35.20-P-0009-01A</li> <li>*BA35.20-P-1001-04A</li> </ul>
BT	Bolted connection, track rod to wheel carrier modified		
4a	Cam bolt	ℹ Installed position: Mark cam bolt relative to rear axle carrier (arrow)	
4b	Rubber mount on track rod	<ul style="list-style-type: none"> <li>ⓘ If necessary after checking: ↓</li> <li>Remove and install rubber mount on track rod</li> <li>🔧 Extraction and insertion tool</li> </ul>	<ul style="list-style-type: none"> <li>AR35.20-P-0112-01B</li> <li>*124589024300</li> </ul>
20 A	Detach, attach bracket	If installed.	
20 B	Unclip, clip in rear axle speed sensor line	If installed.	

**i** Right-hand side: Additional line for brake wear indicator.

**Nm** Tie rod

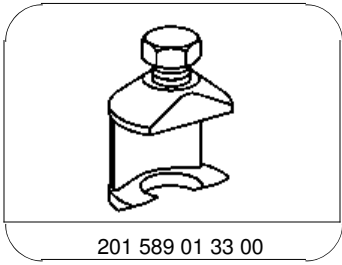
Number	Designation			Model 129	Model 170	
BA35.20-P-1001-04A	Self-locking nut, track rod to rear axle carrier	Stage 1	Nm	70	70	
		Stage 2	Δ°	-	-	
BA35.20-P-1002-04A	Self-locking nut, tie rod at wheel carrier	yellow M10 ×1	Nm	30	30	
		silver or blue M10 ×1	Nm	25	25	
		silver or blue M10 ×1.5	Stage 1	Nm	20	20
			Stage 2	Δ°	45	45

**Nm** Tie rod

Number	Designation			Model 202	Model 208	
BA35.20-P-1001-04A	Self-locking nut, track rod to rear axle carrier	Stage 1	Nm	70	70	
		Stage 2	Δ°	-	-	
BA35.20-P-1002-04A	Self-locking nut, tie rod at wheel carrier	yellow M10 ×1	Nm	30	30	
		silver or blue M10 ×1	Nm	25	25	
		silver or blue M10 ×1.5	Stage 1	Nm	20	20
			Stage 2	Δ°	45	45

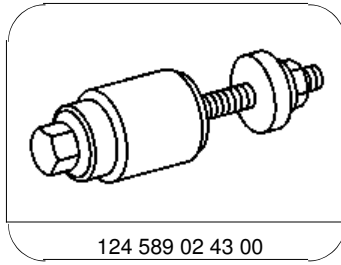
**Nm** Tie rod

Number	Designation			Model 210	
BA35.20-P-1001-04A	Self-locking nut, track rod to rear axle carrier	Stage 1	Nm	70	
		Stage 2	Δ°	-	
BA35.20-P-1002-04A	Self-locking nut, tie rod at wheel carrier	yellow M10 ×1	Nm	30	
		silver or blue M10 ×1	Nm	25	
		silver or blue M10 ×1.5	Stage 1	Nm	20
			Stage 2	Δ°	45



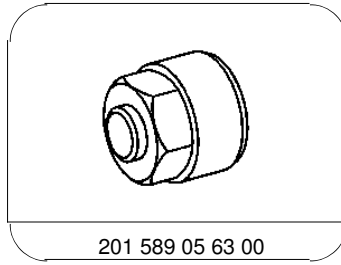
201 589 01 33 00

Puller



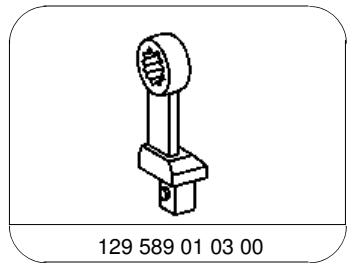
124 589 02 43 00

Extraction and insertion tool



201 589 05 63 00

Thrust piece



129 589 01 03 00

Ring wrench