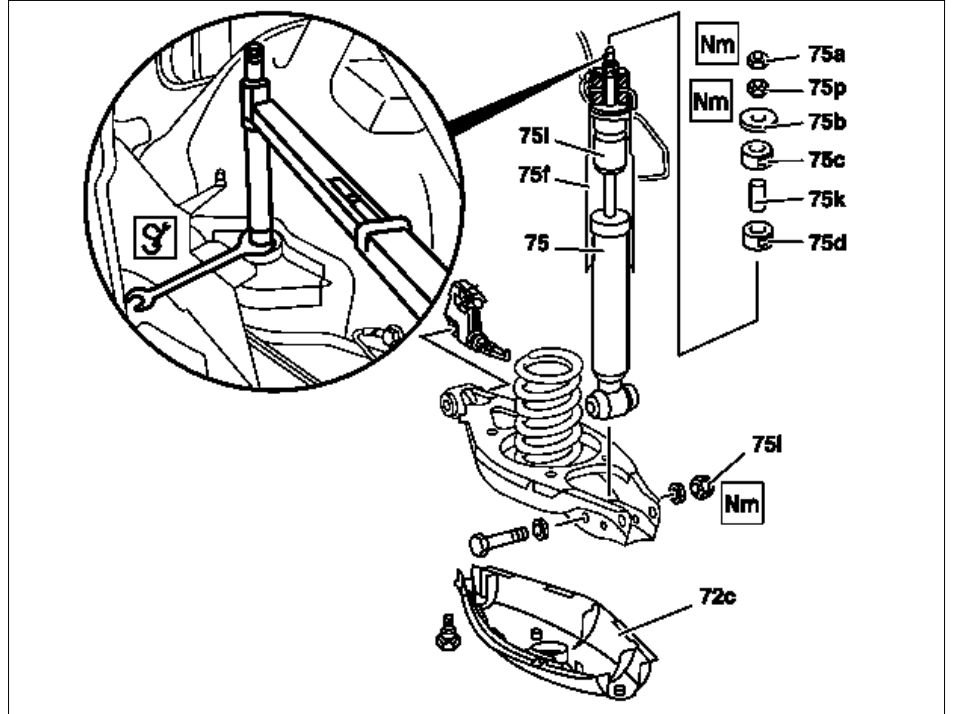


MODEL 129, 140, 170, 202, 203, 208

MODEL 209 except CODE (P98) Black Series

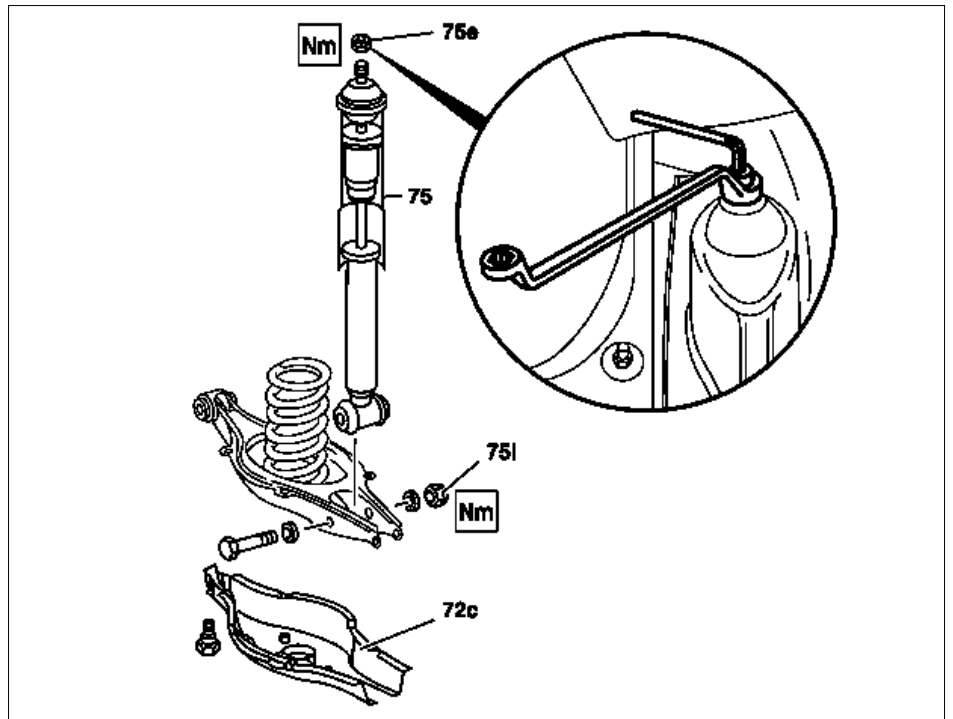
MODEL 210 except CODE (489) All-round level control system

Shock absorber model 129, 170, 202, 203
208, 209 and model 210 with steel
suspension



P32.25-2082-06

Shock absorber model 140 and model 210
with ADS (Adaptive Damper System)



P32.25-2083-06

| | | | |
|-------------------------|---|---|---------------------------|
| | <p>Remove/install</p> | | |
| <p>⚠ Danger!</p> | <p>Risk of death caused by vehicle slipping or toppling off of the lifting platform.</p> | <p>Align vehicle between columns of vehicle lift and position four support plates at vehicle lift support points specified by vehicle manufacturer.</p> | <p>AS00.00-Z-0010-01A</p> |
| <p></p> | <p>Notes on self-locking nuts and bolts</p> | | <p>AH00.00-N-0001-01A</p> |

| | | | |
|---|--|--|--|
| 1 | Detach upper shock absorber mount | <p>i The vehicle must be on its wheels for removing the upper shock absorber mount.</p> <p>i Vehicles with steel suspension:</p> <p>S Models 170, 202, 208, 210</p> <p>Nm Models 129, 170, 202, 203, 208, 209, nut (75p)</p> <p>Nm Models 129, 170, 202, 208 nut (75a)</p> <p>Nm Model 210 nut (75a)</p> <p>i Vehicles with ADS (Adaptive Damper System):</p> <p>i The vehicle must be on its wheels for removing the upper shock absorber mount. Model 140, 210 with ADS (Adaptive Damper System) Counterhold piston rod with Allen wrench (SW5).</p> <p>Nm Model 140, 210 nut (75e)</p> | <p>*202589000900</p> <p>*BA32.25-P-1001-03A</p> <p>*BA32.25-P-1002-03A</p> <p>*BA32.25-P-1003-03B</p> <p>*BA32.25-P-1001-03B</p> |
| 2 | Remove plate (75b) and rubber mount (75c) | Model 129, 170, 202, 203, 208, 209, 210 with steel suspension | |
| 3 | Raise vehicle | | |
| 4 | Remove rear axle switch for roll bar | Model 129 up to 08/95 | ra91001290860x |
| 5 | Remove track control arm shield (72c). | | |
| 6 | Detach shock absorber (75) from spring control arm | <p>Nm Models 129, 170, 202, 203, 208, 209</p> <p>Nm Model 140, 210</p> | <p>*BA32.25-P-1003-03A</p> <p>*BA32.25-P-1002-03B</p> |
| 7 | Remove mounting parts (75k, 75d, 75f, 75i) for shock absorber (75) | <p>Model 129, 170, 202, 208, 210</p> <p>⚠ Check mounting parts (75d, 75f, 75i) for damage and cracks.</p> | |
| 8 | Checking shock absorber | | AR32.25-P-0121A |
| 9 | Install in the reverse order | | |

Nm Rear axle shock absorber

| Number | Designation | | Model 129 | Model 170 | Model 202 |
|--------------------|---|--------|-----------|-----------|-----------|
| BA32.25-P-1001-03A | Nut for attaching shock absorber to frame floor | Nm | 18 | 18 | 18 |
| | | M10 Nm | - | - | - |
| BA32.25-P-1002-03A | Jam nut for attaching shock absorber to frame floor assembly | Nm | 30 | 30 | 30 |
| BA32.25-P-1003-03A | Self-locking nut for attaching shock absorber to spring control arm | Nm | 55 | 55 | 55 |
| | | M10 Nm | - | - | - |

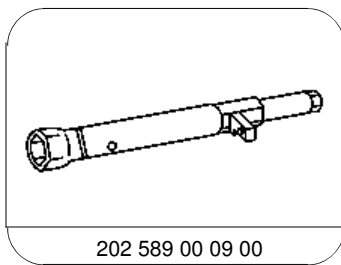
Nm Rear axle shock absorber

| Number | Designation | | Model 203 | Model 208 | Model 209 without code P98 |
|--------------------|---|--------|-----------|-----------|----------------------------|
| BA32.25-P-1001-03A | Nut for attaching shock absorber to frame floor | Nm | 30 | 18 | 20 |
| | | M10 Nm | - | - | - |

| | | | | | |
|--------------------|---|--------|----|----|----|
| BA32.25-P-1002-03A | Jam nut for attaching shock absorber to frame floor assembly | Nm | - | 30 | - |
| BA32.25-P-1003-03A | Self-locking nut for attaching shock absorber to spring control arm | Nm | 55 | 55 | 50 |
| | | M10 Nm | - | - | - |

Nm Rear axle shock absorber

| Number | Designation | | Model 140 | Model 210 |
|--------------------|---|----|-----------|-----------|
| BA32.25-P-1001-03B | Self-locking nut for attaching shock absorber to frame floor | Nm | 40 | - |
| BA32.25-P-1002-03B | Self-locking nut for attaching shock absorber to spring control arm | Nm | 100 | 55 |
| BA32.25-P-1003-03B | Lock nut, shock absorber to frame floor | Nm | - | 30 |



202 589 00 09 00

Socket wrench