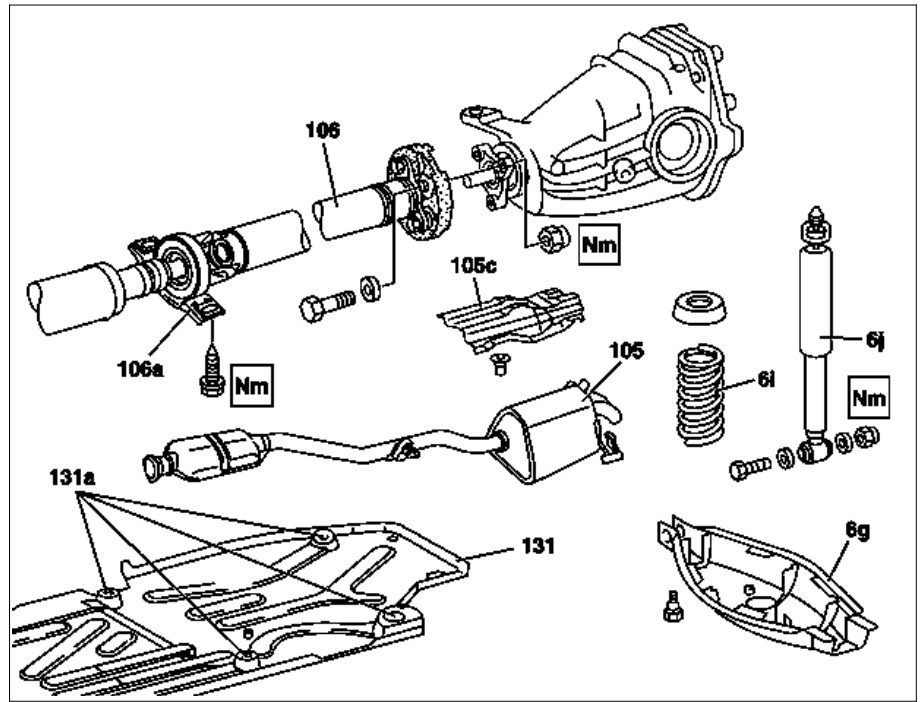
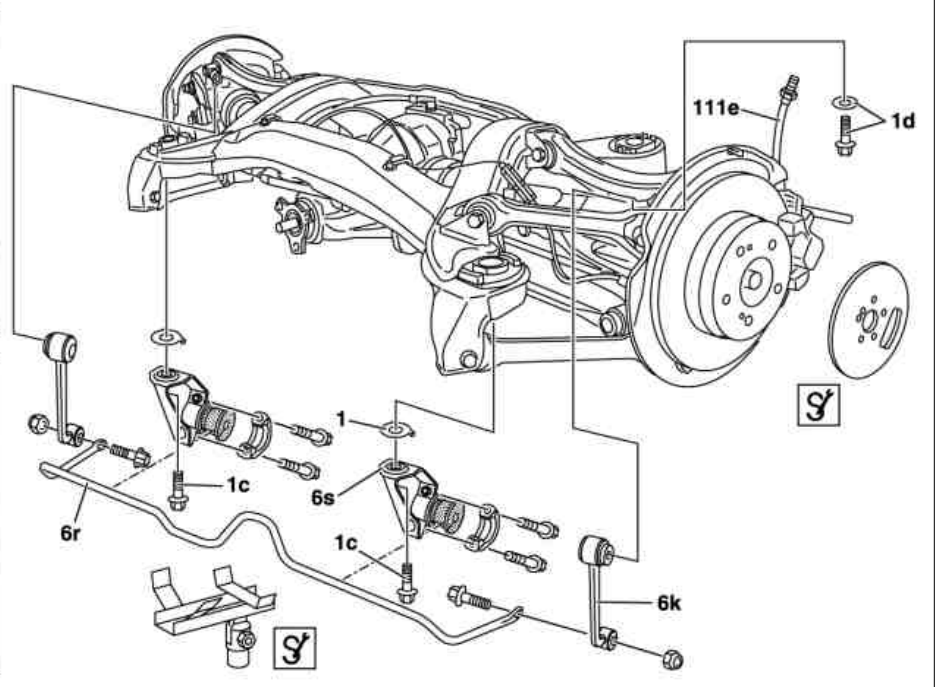
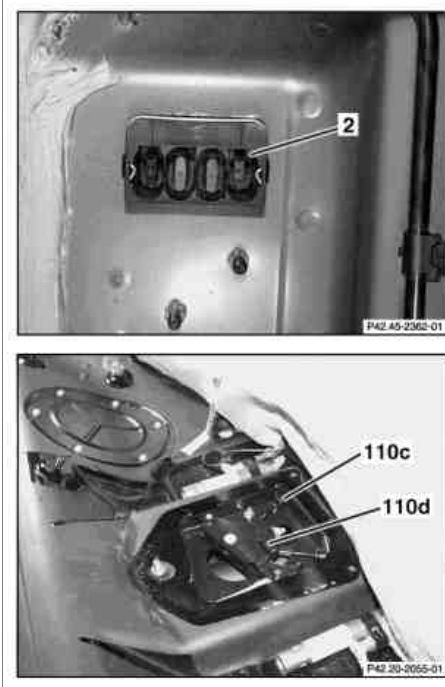


MODEL 203

MODEL 209 except CODE (P98) Black Series



P35.10-2087-06





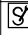

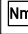

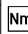

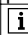
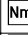
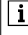


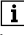


P35.10-2204-09

**Modification notes**

20.3.07	Wheel bolt	Model 209	*BA40.10-P-1001-01A
---------	------------	-----------	---------------------

⚠	<b>Remove/install</b>		
⚠ <b>Danger!</b>	<b>Risk of death</b> caused by vehicle slipping or toppling off of the lifting platform.	Align vehicle between columns of vehicle lift and position four support plates at vehicle lift support points specified by vehicle manufacturer.	AS00.00-Z-0010-01A
ⓘ	Notes on self-locking nuts and bolts		AH00.00-N-0001-01A

 <b>Installation</b>	<b>Caution: important note:</b> The thread in the frame floor assembly must be recut and blown out on a mandatory basis as the remaining adhesive remains prevent the necessary pretension force of the bolt being achieved, despite the specified torque and specified rotational angle being achieved. If this is not observed then the faulty bolt pretension force will cause transverse forces to be applied to the bolt, which may cause the bolt to fracture		
	While working on the rear axle, care must be taken to ensure that the surface of aluminum components do not get any scratches, cracks and notches. Otherwise the service life of the parts will be affected		
 <b>Installation</b>	Only tighten nuts and bolts of chassis components when vehicle is in a ready-to-drive condition.		
1	Remove rear seat cushion	 Fold rear seat cushion forwards. Model 203.0/ 2/ 7, 209.3 with code 287 Through-loading feature Model 203.0/ 7 without code 287 Through-loading feature Model 209.4	AR91.12-P-1020P AR91.12-P-1020PC <b>AR91.12-P-1020QA</b>
2	Disconnect rear brake cables from idler lever (110d) and idler lever housing (110c)		*129589116300
3	Secure vehicle on the lifting platform		
4 	Remove wheels Remove/install wheels, rotate if necessary		<b>AP40.10-P-4050Z</b> *BA40.10-P-1001-01A
5	Remove rear diagonal struts	Model 209.4  <b>Installation:</b> The diagonal struts may only be installed when the vehicle has its wheels on the ground in order to avoid stresses. 	*BA61.10-P-1010-01C
6	Remove exhaust system (105) from flange connection	Engine 111.951 in model 203.035/ 235/ 735 Engine 111.955 in model 203.045 /245 /745 Engine 111.981 in model 203.747 engine 112 in model 203, 209 Engine 113.968 in model 209.375 /475 Engine 113.987 in Model 209.376 up to 23.4.04 Engine 113.987 in model 209.476 Engine 156.982 in model 209.477 ENGINE 611.962 in MODELS 203.004/ 006/ 204/ 206/ 706 Engine 612.962 in model 203.016 /216 Engine 612.967 in model 209.316 Engine 612.990 in Model 203.018 /218 /718 Engine 646 in model 203, 209 Engine 642 in MODEL 203, 209 Engine 113.988 in model 203.076 /276 Engine 113.987 in Model 209.376 as of 24.4.04 Engine 156.982 in model 209.377 Engine 271.940 in model 203.042 / 242 / 742 Engine 271.940 in model 209.342 /442 Engine 271.946 in model 203.046 /246 /746 Engine 271.948 in Model 203.040 /240 /740 Engine 271.921 in model 203.730 Engine 271.955 in model 209.341 /441 Engine 271.942 in model 203, 209.3 Engine 272 in model 203.052 /054 /056 /087 /092 /252 /254 /256 /287 /292 /752 /756 Engine 272 in model 209.354 /356 /454 /456 Engine 273 in model 209.372 /472	AR49.10-P-7000PR <b>AR49.10-P-7000PV</b> AR49.10-P-7000PP AR49.10-P-7000PF <b>AR49.10-P-7000PM</b> <b>AR49.10-P-7000PI</b> AR49.10-P-7000AC AR49.10-P-7000QK AR49.10-P-7000QD <b>AR49.10-P-7000QB</b>
7	Remove rear exhaust shielding plate (105c)	 To do this, lift front exhaust shielding plate	
8	Remove mounting bolts of propeller shaft intermediate bearing (106a)	 <b>Installation:</b> Attach the propeller shaft center support bearing to the underfloor. 	<b>AR41.10-P-0050-11DA</b> *BA41.40-P-1001-01A
9	Detach rear propellor shaft (106) from rear differential assembly	 Tie up rear propeller shaft (106) to one side. The flexible coupling remains on the rear propeller shaft (106).	<b>AR41.10-P-0050-03EA</b>

		<p><b>i</b> <b>Installation:</b> Attach rear propeller shaft (106) to rear axle differential.</p> <p><b>i</b> <b>Installation:</b> Replace self-locking nuts.</p> <p>Nm</p>	AR41.10-P-0050-04EA  *BA41.10-P-1002-01A
10	Remove torsion bar (6r)	<b>i</b> The link rods (6k) remain on the wheel carriers.	AR32.20-P-0315P
11	Unscrew brake calipers from wheel carriers	<b>i</b>  To relieve the strain on the brake hoses, fasten the rear brake calipers to the vehicle free of tension so that they are not damaged during repair work.	*BA42.10-P-1001-12C
12	Disconnect electrical connectors (2) of rear axle rpm sensor on vehicle floor		
13	Remove rear springs (6i)		AR32.20-P-0230P
14	Unscrew shock absorbers (6j) on spring control arms	<b>i</b> To do this, remove the spring control arm covers (6g).	*BA32.25-P-1003-03A
15	Unscrew nuts (131a) of underfloor paneling (131)		
16	Unscrew fuel filter from bracket	Vehicles with outboard fuel filter <b>i</b> Do not disconnect fuel lines. <b>i</b> Hold fuel filter to the side.	
17	Support rear axle and secure to prevent it from falling down		
18	Remove rear axle suspension bolts (1c, 1d)	<b>i</b> <b>Installation:</b> Recut thread in frame floor assembly and blow out. Use new bolts and Replace shims (1) on stabilizer bar mounts (6s).	*BA35.10-P-1001-01A *BA35.10-P-1002-01A
19	Lower rear axle while simultaneously pulling to the rear.	<b>i</b>  On vehicles with level control when lowering ensure that the level controller is not damaged in order to ensure its function.	
20	Install in the reverse order		
	<b>Checking</b>		
21	Check headlamp adjustment Check and correct headlamp adjustment		AP82.10-P-8260P

#### **Nm** Frame floor assembly

Number	Designation		Model 209 except 209.4	Model 209 .4
BA61.10-P-1010-01C	Self-locking bolt, rear diagonal strut to frame floor	Nm	80	80

#### **Nm** Rear axle shock absorber

Number	Designation		Model 203	Model 209 without code P98
BA32.25-P-1003-03A	Self-locking nut for attaching shock absorber to spring control arm	Nm	55	50
		M10 Nm	-	-

#### **Nm** Rear axle carrier

Number	Designation		Model 203	Model 209 without code P98		
BA35.10-P-1001-01A	Self-locking bolt, front rear axle carrier rubber mount to frame floor	Nm	-	-		
		with bolt	Stage 1	Nm	-	-
		Flange Ø 24 mm	Stage 2	Δ°	-	-
		with bolt	Stage 1	Nm	40	40
	flange Ø 26 mm	Stage 2	Δ°	90	90	
BA35.10-P-1002-01A	Self-locking bolt, rear axle carrier rear rubber mount to frame floor	Nm	-	-		
		with bolt	Stage 1	Nm	-	-
		Flange Ø 24 mm	Stage 2	Δ°	-	-
		with bolt	Stage 1	Nm	40	40
	flange Ø 26 mm	Stage 2	Δ°	90	90	

#### Wheels

Number	Designation		Model 203	Model 209 without code P98
BA40.10-P-1001-01A	Wheel bolt	Nm	110	110

#### Propeller shaft

Number	Designation		Model 203	Model 209
BA41.10-P-1002-01A	Self-locking nut, flexible coupling to rear propeller shaft or rear axle differential.	M10 Nm	40	36
		M12 Nm	60	58

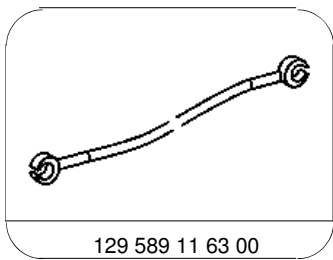
#### Propeller shaft intermediate bearing

Number	Designation		Model 203	Model 209	
BA41.40-P-1001-01A	Bolt, propeller shaft intermediate bearing to frame floor assembly	Self-tapping screw	Nm	-	-
		Bolt with washer	Nm	-	-

	Bolt with collar and self-centering tip	Nm	30	30
	Bolt with collar and without self-centering tip	Nm	-	-

**Nm** Rear axle brake caliper

Number	Designation		Model 203	Model 209 except 209.377/477, except model 209.376/476 as of 24.4.04	Model 209.376/476 as of 24.4.04, model 209.477, model 209.377 without code P98 (4-piston fixed brake caliper)
BA42.10-P-1001-12C	Self-locking bolt, brake caliper to wheel carrier	Nm	55	55	85



Snap-release tool